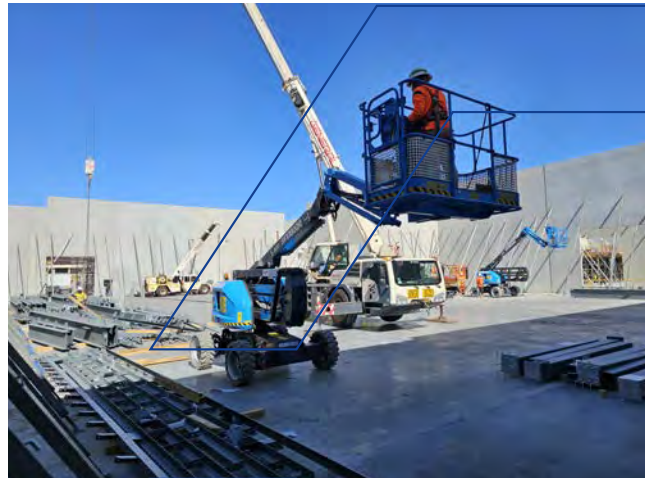


EDUCATION | COMMERCIAL | INDUSTRIAL | MINING



CAPABILITY STATEMENT





From fabrication detailing to installation services, **EVO Steel Structures** provide complete end-to-end solutions to suit our customer's structural steel supply and install needs.

We support the education, commercial, industrial, and mining sectors across Australia, and pride ourselves on being organisation-driven with visible and transparent processes.

## VISION

To be your structural steel supply and install partner of choice.

## VALUES

- ➔ **Integrity** - Our word has no price tag.
- ➔ **Effectiveness** - Our products and services solve clients' problems completely.
- ➔ **Improvement** - Regardless of how well we have delivered today, we shall deliver better tomorrow.

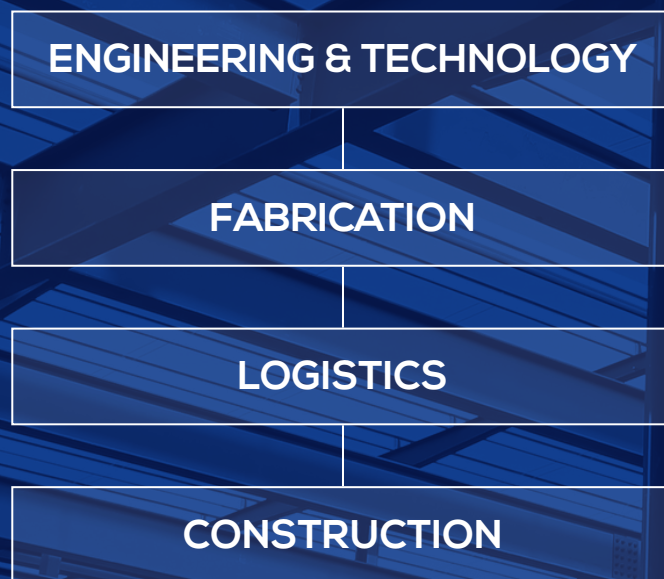
## MISSION

At EVO Steel Structures, we are determined to push the boundaries of project delivery excellence by listening to our clients and constantly improving. We set optimal execution configurations, monitor delivery, and adjust delivery to maximise results.

# THE EVO DIFFERENCE



# OUR CAPABILITIES



Your structural steel supply and install partner of choice



**At Evo Steel Structures, we provide high-value engineering services as part of our fabrication shop detailing process.**

Our in-house project engineers work collaboratively with our customers across the entire lifecycle of the project. Certified to Australian standards, we provide real-time technical support from shop detailing, fabrication, and construction to project completion. We pride ourselves on delivering quality outcomes in short timelines to minimise project delays.

At EVO Steel Structures, we utilise technology to provide our clients with the best outcomes. This includes 3D Clash Detection review, 3D Constructability and our EVO tracking system which catalogues each individual component and assigns a unique QR code. This tracking system supports efficient project planning and provides transparent insights into the status of every project.

**Our complete, end-to-end solutions and commitment to quality customer service ensure we exceed our customer's expectations, time and again.**





**At EVO Steel Structures, we utilise our owned and operated fabrication facilities based in low cost centres to provide a commercial benefit to the end user.**

This partnership enables us to offer our clients timely, high-value fabrication and procurement services which comply with all relevant Australian standards and quality control requirements.

**Specifically:**

- We work in accordance with ISO 9001.
- All products are tested by accredited professionals to Australian AS4100 regulations, standards and building codes.
- We engage third-party experts to conduct thorough inspections to ensure quality products.

All fabrication is handled by our people on the ground, not produced and managed by different companies. ***This offers a streamlined experience for our clients.***

**We have a long track record of delivering projects to clients across Australia.**



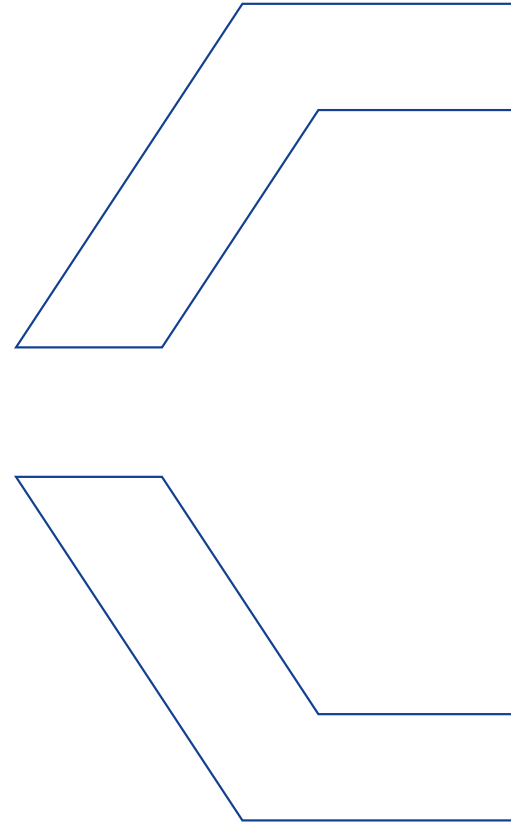


**Evo Steel Structure's Logistics Hub and Site Support Facility is our central hub, built to serve our clients structural steel fabrication and construction needs.**

Our warehouse is conveniently located near all major ports and freeways, enabling easy transport of steel cradles and oversize loads.

Fully equipped to seamlessly receive, log, and ship all fabricated structural steel components to sites across Australia, our facility supports urgent requests for site support to minimise site downtime. From here, our team will also preassemble modules in our facility to reduce costs and risks associated with completing works on site. Our robust logistics system then securely packs and ships all products directly from our facility to client sites.

This end-to-end process is completed in strict accordance with all program requirements. This guarantees safe, timely delivery of our Evo Steel Structure's structural steel products.





**EVO Steel Structure's multi-disciplinary, in-house construction services team are experienced, qualified professionals. We support our clients throughout the construction phase.**

Our quality assurance systems and practises reflect our commitment to managing project risks and delivering quality outcomes, as we prioritise the health and safety of our workforce.

**Our management services encompass all freight modes of transport and include:**

- Heavy module planning
- Site erection (including heavy lift design and planning)



*Your structural steel supply and install partner of choice*



### Multi-disciplinary Construction

- Site Construction focused on managing project risks, and the health and safety of our workforce.
- Logistics management including heavy module planning encompassing all freight modes of transport.
- Site erection including heavy lift design and planning.

### Off-site Modularisation and Preassembly

- Planning and execution of offsite modularisation combined with SMP and E&I fit out reduces construction capex costs, and allows the project to gain progress advantages by constructing in multiple locations simultaneously.

### Commissioning and Handover

- Multi-disciplinary commissioning of process and non-process infrastructure.
- Provide support based on client requirements during the handover and initial operations period.

## EXPERIENCE

- **BUGARDI Contracting**  
– Roy Hill KNMo4 NPI – Structural Steel Supply
- **Karara Mining Limited**  
– Structural Steel and E&I Installation, and Commissioning of Switchroom
- **Tronox Atlas Mineral Sands**  
– Design and Procurement Management
- **Holcim**  
– Mobile Batch Plant and Quarry’s – SMP and E&I Construction Services
- **Norton Gold Fields Binduli North**  
– NPI Design and Construction
- **Fenner Dunlop K3 Installation**  
– Construction and Commissioning
- **First Quantum Minerals**  
– SMP Modularisation and Preassembly
- **BHP South Flank Stockyard Machines**  
– Construction and Commissioning







## Offsite Modularisation and Preassembly Services

### FIRST QUANTUM MINERALS SHOEMAKER LEVY PROJECT

- Modularisation, preassembly and mechanical fit-out of conveyor modules and shuttle assemblies. By taking advantage of our preassembly facility, the client capitalised in both cost and time savings.



## Design and Construction

### FENNER DUNLOP K-3 PROJECT

- Construction and commissioning completed ahead of schedule with excellent safety metrics. Execution included a 30% local Indigenous workforce and one traineeship.
- 32,000 LTI free hours.



## Construction Services

### BHP SOUTH FLANK STOCKYARD MACHINES PROJECT

- SMP Construction services including punch-listing and commissioning support.
- 18,000 LTI free hours.



## Construction and Commissioning Services

### KARARA MINING LIMITED NEW FILTER BUILDING PROJECT

- By engaging us for the Structural Steel, and E&I installation, and commissioning of the new switchroom, the client eliminated any risks relating to scope gaps and multiple contractor interface.



**Contact details:**

**Email:** [admin@evostructures.com.au](mailto:admin@evostructures.com.au)

**Address:** 1 Butcher Street, Kwinana Beach, WA 6167

**Website:** [www.evostructures.com.au](http://www.evostructures.com.au)

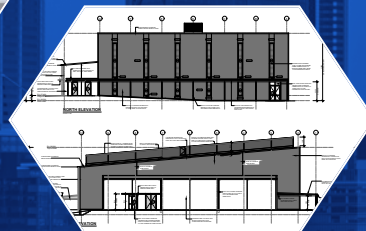
## Other Projects



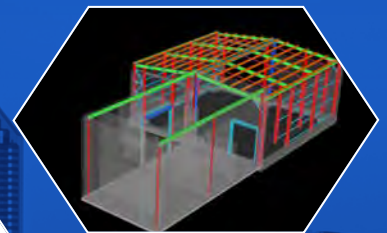
The Kings College  
Junior School



Mandurah Baptist  
College, Stage 4



Carey Baptist  
College, Stage 4A



Marine Infrastructure  
& Oyster Processing  
Facilities



Sotto



Abode Apartments



Harvey Norman



Coast Residence